

**SLC25A1 Polyclonal Antibody**  
**Purified Rabbit Polyclonal Antibody (Pab)**  
**Catalog # AP57930**

**Specification**

**SLC25A1 Polyclonal Antibody - Product Information**

Application	WB, IHC-P, IHC-F, IF, ICC, E
Primary Accession	<a href="#">P53007</a>
Reactivity	Rat, Pig, Dog, Bovine
Host	Rabbit
Clonality	Polyclonal
Calculated MW	34 KDa
Physical State	Liquid
Immunogen	KLH conjugated synthetic peptide derived from human SLC25A1
Epitope Specificity	1-100/311
Isotype	IgG
<b>Purity</b>	
affinity purified by Protein A	
Buffer	<b>Preservative: 0.02% Proclin300,</b> <b>Constituents: 1% BSA, 0.01M PBS, pH7.4.</b>
SUBCELLULAR LOCATION	<b>Mitochondrion inner membrane.</b>
SIMILARITY	<b>Belongs to the mitochondrial carrier family. Contains 3 Solcar repeats.</b>
Important Note	<b>This product as supplied is intended for research use only, not for use in human, therapeutic or diagnostic applications.</b>

**Background Descriptions**

This gene encodes a member of the mitochondrial carrier subfamily of solute carrier proteins. Members of this family include nuclear-encoded transporters that translocate small metabolites across the mitochondrial membrane. This protein regulates the movement of citrate across the inner membranes of the mitochondria. Mutations in this gene have been associated with combined D-2- and L-2-hydroxyglutaric aciduria. Pseudogenes of this gene have been identified on chromosomes 7, 11, 16, and 19. Alternative splicing results in multiple transcript variants. [provided by RefSeq, Dec 2013]

**SLC25A1 Polyclonal Antibody - Additional Information**

**Gene ID** 6576

**Other Names**

Tricarboxylate transport protein, mitochondrial, Citrate transport protein, CTP, Solute carrier family 25 member 1, Tricarboxylate carrier protein, SLC25A1, SLC20A3

**Dilution**

<span class = "dilution\_WB">WB~~1:1000</span><br \><span class = "dilution\_IHC-P">IHC-P~~N/A</span><br \><span class = "dilution\_IHC-F">IHC-F~~N/A</span><br \><span class =

=dilution\_IF">IF~1:50~200</span><br \><span class ="dilution\_ICC">ICC~N/A</span><br \><span class ="dilution\_E">E~N/A</span>

**Format**

0.01M TBS(pH7.4), 0.09% (W/V) sodium azide and 50% Glyce

**Storage**

Store at -20 °C for one year. Avoid repeated freeze/thaw cycles. When reconstituted in sterile pH 7.4 0.01M PBS or diluent of antibody the antibody is stable for at least two weeks at 2-4 °C.

**SLC25A1 Polyclonal Antibody - Protein Information**

**Name** SLC25A1

**Synonyms** SLC20A3

**Function**

Mitochondrial electroneutral antiporter that exports citrate from the mitochondria into the cytosol in exchange for malate (PubMed:<a href="http://www.uniprot.org/citations/26870663" target="\_blank">26870663</a>, PubMed:<a href="http://www.uniprot.org/citations/29031613" target="\_blank">29031613</a>, PubMed:<a href="http://www.uniprot.org/citations/29238895" target="\_blank">29238895</a>, PubMed:<a href="http://www.uniprot.org/citations/39881208" target="\_blank">39881208</a>). Also able to mediate the exchange of citrate for isocitrate, phosphoenolpyruvate, cis-aconitate and to a lesser extent trans- aconitate, maleate and succinate (PubMed:<a href="http://www.uniprot.org/citations/29031613" target="\_blank">29031613</a>). In the cytoplasm, citrate plays important roles in fatty acid and sterol synthesis, regulation of glycolysis, protein acetylation, and other physiopathological processes (PubMed:<a href="http://www.uniprot.org/citations/29031613" target="\_blank">29031613</a>, PubMed:<a href="http://www.uniprot.org/citations/29238895" target="\_blank">29238895</a>, PubMed:<a href="http://www.uniprot.org/citations/39881208" target="\_blank">39881208</a>).

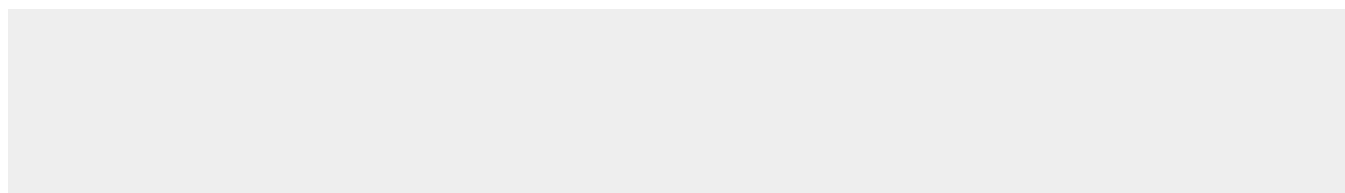
**Cellular Location**

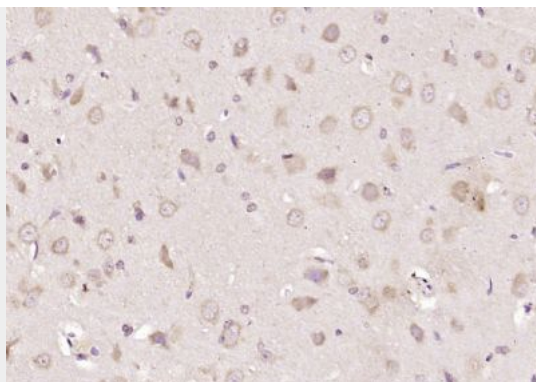
Mitochondrion inner membrane {ECO:0000250|UniProtKB:Q8JZU2}; Multi-pass membrane protein

**SLC25A1 Polyclonal Antibody - Protocols**

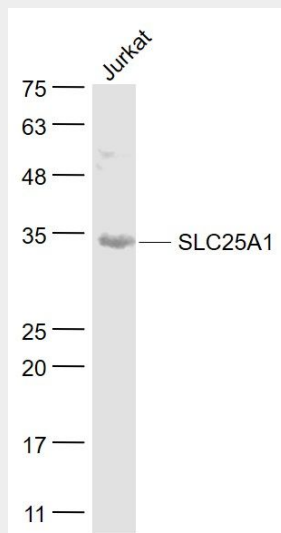
Provided below are standard protocols that you may find useful for product applications.

- [Western Blot](#)
- [Blocking Peptides](#)
- [Dot Blot](#)
- [Immunohistochemistry](#)
- [Immunofluorescence](#)
- [Immunoprecipitation](#)
- [Flow Cytometry](#)
- [Cell Culture](#)

**SLC25A1 Polyclonal Antibody - Images**



Paraformaldehyde-fixed, paraffin embedded (rat brain tissue); Antigen retrieval by boiling in sodium citrate buffer (pH6.0) for 15min; Block endogenous peroxidase by 3% hydrogen peroxide for 20 minutes; Blocking buffer (normal goat serum) at 37°C for 30min; Antibody incubation with (SLC25A1) Polyclonal Antibody, Unconjugated (bs-21219R) at 1:400 overnight at 4°C, followed by operating according to SP Kit(Rabbit) (sp-0023) instructions and DAB staining.



**Sample:**

Jurkat(Human) Cell Lysate at 30 ug

Primary: Anti- SLC25A1 (bs-21219R) at 1/1000 dilution

Secondary: IRDye800CW Goat Anti-Rabbit IgG at 1/20000 dilution

Predicted band size: 34 kD

Observed band size: 34 kD